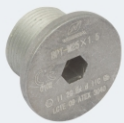


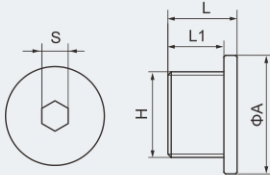
Selection table of BPT stopping plug (Ex db Ex eb)

Explosion protection	IECEX CQM 25.0022X
Global (IECEX)	Ex db IIC Gb
Gas and dust	Ex eb IIC Gb
	Ex tb IIIC Db
Europe (ATEX)	ACE25ATEX020X
Gas and dust	Ⓔ II 2 G Ex db IIC Gb
	Ⓔ II 2 G Ex eb IIC Gb
	Ⓔ II 2 D Ex tb IIIC Db
Certificates	IECEX; ATEX; CU-TR
Degree of protection	IP66
Service temperature	-60°C~+100°C
Material	Copper-free Aluminium Alloy, galvanized carbon steel, nickel plated brass or stainless steel.
Function	Metric thread is standard type; G thread or NPT thread is optional. To be used at spare entries of explosion-proof equipment; corrosion-proof and waterproof; supplied with seal gasket (not applicable for NPT thread).

Note: 1. Please specify material when ordering. The above weight is based upon nickel plated brass.
2. Metric threads are 1.5mm pitch as standard, others thread pitch can be customized, please specify when ordering.

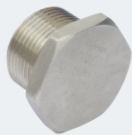


BPT Ex stopping plug

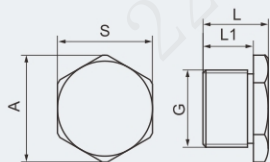


BPT stopping plug (Copper-free Aluminium Alloy)

Entry thread "H"		Dimensions(mm)				Ordering code	Weight (kg)
Metric	G	A	S	L	L1		
M20	1/2"	30	8	22	17	720001	0.05
M25	3/4"	36	8	21	17	720002	0.05
M32	1"	45	10	25	20	720003	0.05
M40	1 1/4"	54	10	25	20	720004	0.05
M50	1 1/2"	62	10	26	20	720005	0.10
M63	2"	77.5	10	26	20	720006	0.16



BPT Ex stopping plug (Metric/G)

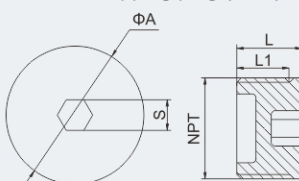


BPT stopping plug (galvanized carbon steel, nickel plated brass or stainless steel)

Entry thread "G"		Dimensions(mm)				Ordering code	Weight (kg)
Metric	G	A	S	L	L1		
M16		25	22	19	15	720025	0.05
M20	1/2"	30	27	19	15	720007	0.05
M25	3/4"	36	32	19	15	720008	0.07
M32	1"	42	38	19	15	720009	0.15
M40	1 1/4"	50	46	25	20	720010	0.17
M50	1 1/2"	60	55	25	20	720011	0.26
M63	2"	72	68	26	20	720012	0.47
M75	2 1/2"	88	83	26	20	720013	0.66
M90	3"	100	95	26	20	720014	0.90
M115	4"	127	122	26	20	720015	1.15



BPT Ex stopping plug (NPT)



BPT stopping plug (nickel plated brass or stainless steel)

Entry thread "NPT"		Dimensions(mm)				Ordering code	Weight (kg)
NPT	A	S	L	L1			
3/8"	18	8	18	15	720026	0.05	
1/2"	22	10	18	15	720016	0.05	
3/4"	27	10	18	15	720017	0.07	
1"	34	10	22	19	720018	0.15	
1 1/4"	43	10	22	19	720019	0.17	
1 1/2"	49	19	22	19	720020	0.26	
2"	61	19	23	20	720021	0.47	
2 1/2"	74	19	33	29	720022	0.66	
3"	90	19	35	31	720023	0.90	
4"	115	19	38	34	720024	1.15	