

应用场所 Application

- 适用于长度超过100m以上的船舶在狭窄航道，如巴拿马运河和圣劳伦斯航道上作夜航时，需设置操舵灯(又称操纵标)；安装于船首(前桅)，并能从船桥沿船的中心线清晰地看到操舵灯蓝色光，若被(如克令吊)遮挡，则应在船首(前桅)左右各安装一盏操舵灯。
- Suitable for vessels longer than 100m to pass through the narrow channel, such as the Panama Canal and St. Lawrence waterway for navigation at night, it is required to set the steering light, which is installed at the stem (foremast) and the blue light of the steering light could be seen clearly from the Funabashi along the center line. If it is blocked by the crane, the steering light should be installed on the left and right of the stem(foremast).

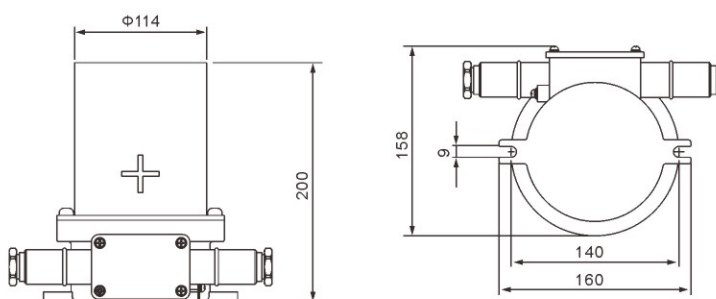


灯体 Housing

- 黄铜材质
- Brass material

透明罩 Transparent cover

- 灯罩采用专用耐热玻璃
- Lampshade is made of specific heat resistant glass



技术参数 Technical parameters

| | |
|------------------------------|--|
| 执行标准 Conformity to standards | IEC 60598, CCS 入级规范 (CCS standard) |
| 环境温度 Ambient temperature | -40℃~+55℃ |
| 光源类型 Light source | LED模组 LED module |
| 灯座 Lamp holder | E27 |
| 防护等级 Degree of protection | IP66 |
| 电缆引入口 Cable entriss | 2×FQM-IV, M25×1.5格兰(黄铜镀镍), 适用于Φ10~Φ18mm电缆 2×FQM-IV, M25×1.5 gland (Nickel plated brass), suitable for Φ10-Φ18mm cable |
| 接线端子 Terminal | 1.5~2.5mm ² |

选配表 Selection table

| 型号 Type | 额定电压 Rated voltage | 额定功率 Rated power | 光源类型 Light source | 颜色 Color | 重量(kg) Weight |
|------------|-----------------------|---------------------|----------------------|-------------|------------------|
| CXH7 | 110V~230V AC, 24V DC | 8W | LED 模组 LED module | 蓝色 Blue | 3.0 |