



Waterproof



Dustproof



Corrosionproof

型号规格含义 Nomenclature

FGJ - □(□) / □(□) □

b:变径(不变径不注) b:Reducer (optional)

螺纹规格(内或外) Thread (female or male)

螺纹规格(内或外) Thread (female or male)

防腐管接头 Weatherproof pipe connector



产品特色 Product features

- ◆ 采用优质碳素钢镀锌或不锈钢制成;
- ◆ 螺纹规格可根据用户要求特制或两端规格不同。
- ◆ The product is made of high quality galvanized carbon steel or stainless steel.
- ◆ The thread can be specially made upon request, or both ends are of different specifications.

订货须知 Ordering Information

- ◆ 按照产品型号逐条选择，
例如：需要一内一外G $\frac{3}{4}$ "螺纹防腐管接头，则产品型号为FGJ-G $\frac{3}{4}$ "(外)/G $\frac{3}{4}$ "(内)；需要内G $\frac{3}{4}$ "外G1 $\frac{1}{4}$ "螺纹防腐管接头，则产品型号为FGJ-G $\frac{3}{4}$ "(内)/G1 $\frac{1}{4}$ "(外)；
- ◆ 常规供货为优质碳素钢材质，要求不锈钢或其他材质时请注明。
- ◆ Follow the product nomenclature for selection.
For example: if require corrosion-proof pipe connector, one female & one male G $\frac{3}{4}$ " thread, the type shall be FGJ-G $\frac{3}{4}$ "(male) / G $\frac{3}{4}$ "(female). If require corrosion-proof pipe connector, G $\frac{3}{4}$ " female thread & G1 $\frac{1}{4}$ " male thread, the type shall be FGJ-G $\frac{3}{4}$ "(female) / G1 $\frac{1}{4}$ "(male).
- ◆ High quality carbon steel is supplied for the product, please indicate if stainless steel or other material required.

产品描述 Product description



□(内/Female)/□(内/Female)



□(外/Male)/□(内/Female)

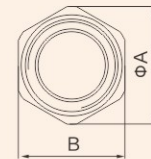
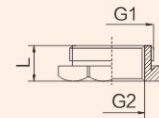
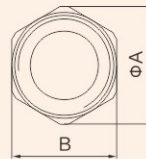
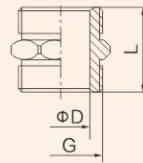
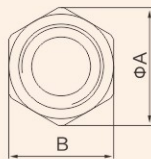
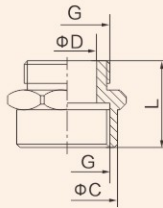
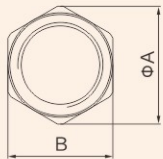
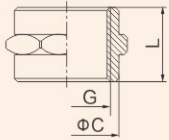


□(外/Male)/□(外/Male)



□(外/Male)/□(内/Female)

外形尺寸 Outline dimension (mm)



A	B	C	L	G	A	B	C	D	L	G	A	B	D	L	G	A	B	L	G1	G2
30	27	25	22	1/2"	30	27	25	13	20	1/2"	30	27	13	18	1/2"	36	32	10.5	3/4"	1/2"
36	32	31	22	3/4"	36	32	31	18	22	3/4"	36	32	18	20	3/4"	42	38	10.5	1"	3/4"
42	38	37	24	1"	42	38	37	25	22	1"	42	38	24	20	1"	52	47	12	1 1/4"	1"
52	47	46	30	1 1/4"	52	47	46	32	25	1 1/4"	52	47	32	24	1 1/4"	60	55	14	1 1/2"	1 1/4"
60	55	54	35	1 1/2"	60	55	54	38	25	1 1/2"	60	55	38	24	1 1/2"	72	68	16	2"	1 1/2"
72	68	65	42	2"	72	68	65	50	28	2"	72	68	50	26	2"	88	83	18	2 1/2"	2"

