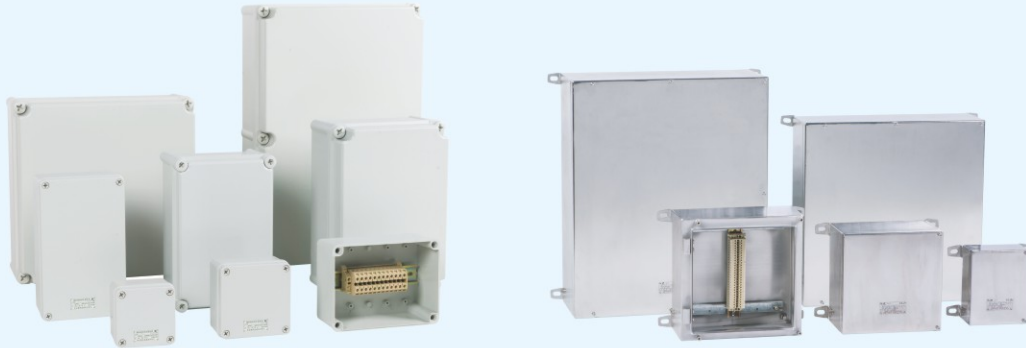


FXJ 系列防水防尘防腐接线箱 FXJ Series Weatherproof Terminal Boxes



GB EN EAC



Waterproof

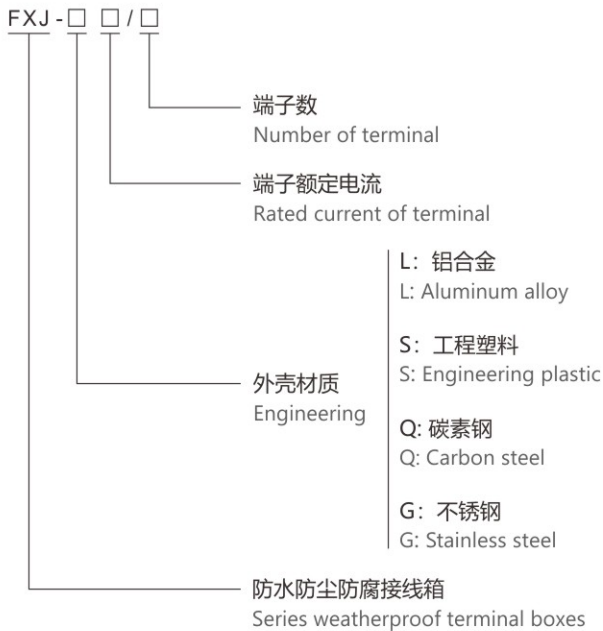


Dustproof



Corrosionproof

型号规格含义 Nomenclature



产品特点 Product Features

- ◆ 主要用于管路配线、配管，接线、分线；
- ◆ 所有外露紧固件均采用不锈钢，密封件采用硅橡胶，耐油、耐酸、耐碱、耐高温、抗老化；
- ◆ 电缆布线，引入装置为复合密封型(钢管布线请注明)；
- ◆ 接合面采用曲路密封结构，具有较强的防水防尘性能；
- ◆ 进线口方向变化多，可根据用户要求任意选配进线口。
- ◆ Mainly utilized for wiring and piping in conduits, enabling connection and distribution of lines.
- ◆ All external fastening components are constructed from stainless steel, while sealing components are made of silicone rubber, offering resistance to oil, acids, alkalis, high temperatures, and aging.
- ◆ For cable wiring, equipped with a composite sealing type cable gland (for steel conduit wiring, please specify).
- ◆ The joint surface adopts a labyrinth path sealing structure, providing excellent weather-proof performance.
- ◆ Multiple entries of different orientations are available, allowing users to freely choose according to their requirements.



订货须知 Ordering Information

- ◆ 请按型号规格含义填写完整的产品型号；
- ◆ 如有特殊要求，请注明。
- ◆ Please specify the product type in accordance with nomenclature.
- ◆ Please specify if they're special requirements.

FXJ 系列防水防尘防腐接线箱

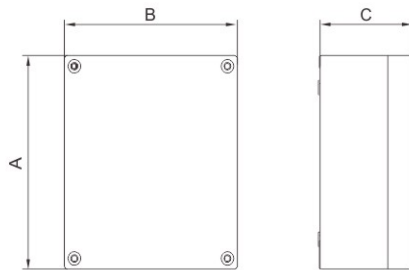
FXJ Series Weatherproof Terminal Boxes

技术参数 Technical Parameters

执行标准 Executive standards	中国GB标准 Chinese GB standards	欧盟EN标准 European EN standards
额定电压 Rated voltage	220V/380V, 230V/400V	Max. 1000V AC 50/60Hz Max. 1500V DC
额定电流 Rated current	≤630A	≤1000A
环境温度 Ambient temperature	-40°C ~ +55°C (-60°C ~ +60°C 可选 Optional)	
防护等级 Degree of protection	IP66、IP67(可选 Optional)	
防腐等级 Corrosion-proof	WF2	C4
螺纹规格 Thread specification	根据用户要求配置 Supplied upon users' request.	
外壳材质 Enclosure material	GRP(PC可选)、不锈钢、碳素钢、铝合金 GRP(PC Optional), Stainless steel, Carbon steel, Aluminum alloy	

外形及安装举例 Outline and Mounting Type

- ◆ GRP(PC可选) GRP(PC Optional)



壳体代号 Enclosure code		外形尺寸 Outline dimension(mm)			接线端子数量 Number of terminal				
		A	B	C	2.5mm ²	4mm ²	6mm ²	10mm ²	16mm ²
I	PC	100	100	75	6	6	4	/	/
	GRP	139	110	100	12	10	8	/	/
II	PC	125	125	75	10	8	6	/	/
	GRP	220	130	109	25	20	18	/	/
III	GRP	160	160	86	16	14	10	/	/
IV	PC	200	150	100	20	16	13	/	/
	GRP	260	179	120	30	25	20	18	/
V	PC	250	150	100	25	20	15	12	/
	GRP	220	220	121.5	25	20	18	15	/
VI	PC	280	190	130	30	25	20	18	/
VI/VIB	GRP	360	220	121.5/171.5	40	40	30	25	20
VII	PC	330	230	160	35	30	25	20	16
VII/VIB	GRP	360	360	121.5/171.5	80	80	60	50	40
VIII	PC	360	360	160	75	66	56	46	36
	GRP	721	360	171.5	160	160	120	100	80
IX	PC	540	360	160	120	110	92	78	60
X	PC	680	500	200	150	140	120	96	80

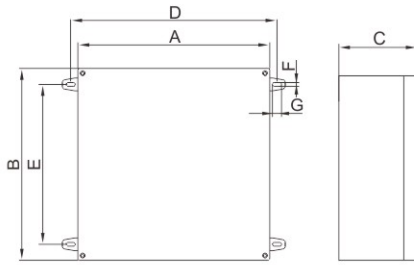
注：本表列举的端子数量为该壳体内所能安装该规格端子的最多数量，实际以用户要求为准。

Note: The number of terminals in the table is the maximum number of terminals of that specification can be installed in the enclosure, user requirements prevail.

FXJ 系列防水防尘防腐接线箱

FXJ Series Weatherproof Terminal Boxes

◆ 不锈钢/碳素钢 Stainless steel/Carbon steel

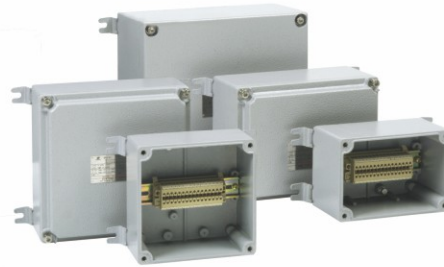
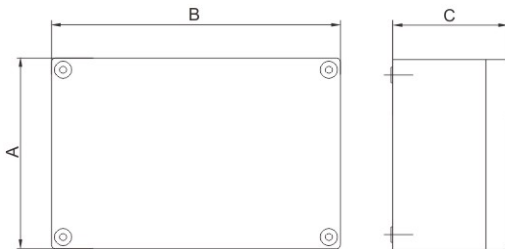


壳体代号 Enclosure code	外形尺寸 Outline dimension(mm)							接线端子数量 Number of terminal				
	A	B	C	D	E	F	G	2.5mm ²	4mm ²	6mm ²	10mm ²	16mm ²
I	150	170	110	176	140	7	17	12	10	8	/	/
II	180	220	110	206	190	7	17	20	17	14	11	9
III	200	300	125	226	270	7	17	36	30	25	22	18
IV	220	360	125	246	330	7	17	40	40	30	25	20
V	360	360	125	386	330	7	17	80	80	60	50	40
VI	400	500	200	436	466	11	20	116	112	88	72	60
VII	400	600	200	436	566	11	20	210	204	162	135	108
VIII	500	700	200	550	640	14	30	246	240	192	165	126
IX	600	800	200	650	740	14	30	282	276	222	195	144

注：本表列举的端子数量为该壳体内所能安装该规格端子的最多数量，实际以用户要求为准。

Note: The number of terminals in the table is the maximum number of terminals of that specification can be installed in the enclosure, user requirements prevail.

◆ 铝合金 Aluminum alloy



壳体代号 Enclosure code	外形尺寸 Outline dimension(mm)			接线端子数量 Number of terminal				
	A	B	C	2.5mm ²	4mm ²	6mm ²	10mm ²	16mm ²
I	132	190	128	18	16	/	/	/
II	190	190	128	18	16	14	/	/
III	190	250	128	30	28	22	/	/
IV	250	250	128	50	40	30	/	/
V	190	300	151	70	60	50	/	/
VI	240	300	151	100	85	55	35	25
VII	280	300	151	105	90	60	40	30
VIII	190	350	151	90	80	70	50	40
IX	300	350	151	120	100	80	55	45
X	350	502	151	180	150	120	105	40

注：本表列举的端子数量为该壳体内所能安装该规格端子的最多数量，实际以用户要求为准。

Note: The number of terminals in the table is the maximum number of terminals of that specification can be installed in the enclosure, user requirements prevail.